

# 5800 Series

## Cast Iron Door Closers



## CONTENTS

Introduction . . . . .	2
Features & Benefits . . . . .	3
Finishes . . . . .	4
How To Order . . . . .	5
Arm Options . . . . .	5
Model/Part Numbers . . . . .	7
Accessories. . . . .	8

### 5800 Series Cast Iron Door Closers

With its modern design and adjustable operation, ACCENTRA™ 5800 Series Cast Iron Door Closers provide an attractive solution for retail, office, government and other commercial facilities. Heavy-duty and hold open arms, along with adjustable spring size, backcheck, closing and latch speed, provide a flexible and economical closer that you can trust for dependable service. The 5800 Series is certified to ANSI/BHMA Grade 1 requirements for long life and reliability, and offers a 10 year warranty.




## FEATURES & BENEFITS



### Features

- ANSI/BHMA A156.4 Grade 1 certified
- Cast iron closer body
- Standard and heavy-duty arms available as hold open or non-hold open
- Adjustments for backcheck, closing and latch speed
- Tri-packed for parallel, regular or top jamb installation
- Sleeve nuts and bolts provided with each closer
- Retrofit for LCN 4040XP
- Non-handed
- Plastic cover
- 10 year warranty
- Backcheck
- Closing speed
- Latching speed
- Delayed action; specify 5801DL

### Compliance Standards

- Certified for ANSI/BHMA A156.4 Grade 1 
- 90 minute positive pressure fire rating per UL10c and CAN / ULC S104 
- Meets requirements for Americans with Disabilities Act (ADA) and ANSI/BHMA A117.1 

### Benefits

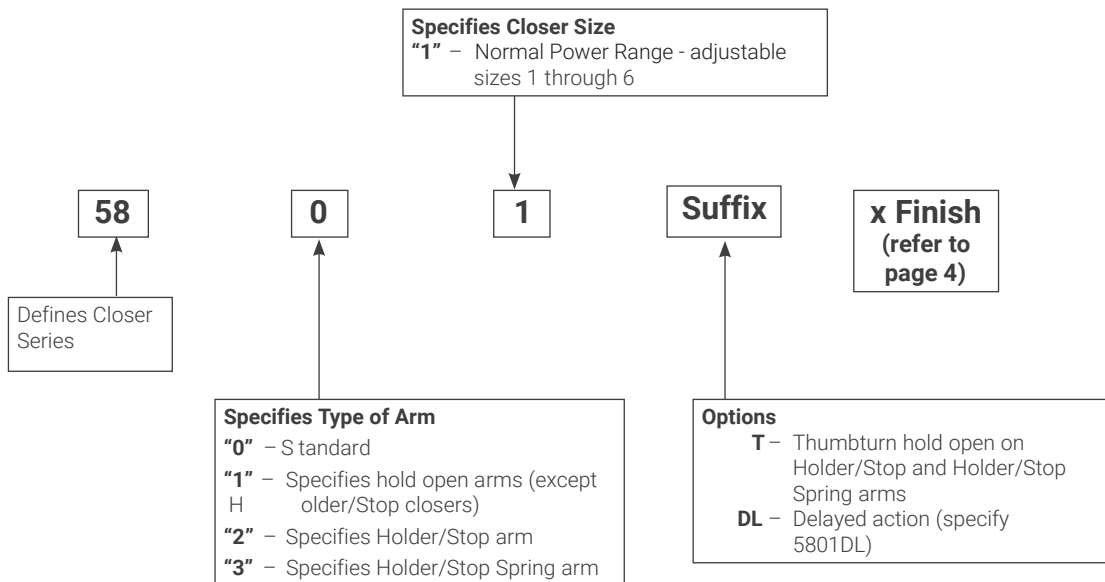
- **Reliable:** Adjustable spring power, latch and closing speeds ensure positive latching
- **Flexible:** Choice of standard or heavy-duty arms and adjustable spring power meets needs of any application
- **Hassle-Free Retrofits:** Easily replaces competitive closers
- **Strong and Durable:** ANSI/BHMA Grade 1 certified for long life

### CAUTION: Door Closers for Low Opening Force Applications:

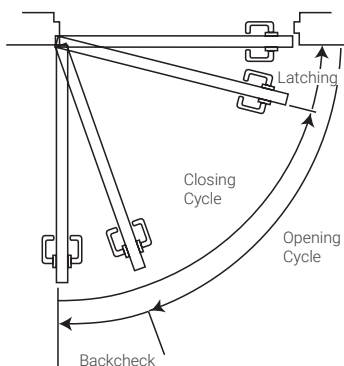
Door closers installed in openings required to meet the requirements of the Americans With Disabilities Act or ANSI/BHMA Standard A117.1, when adjusted to meet those requirements, may not provide adequate closing power to dependably close and latch the door based on opening or site conditions.

ANSI/BHMA Code Finish Description		
689 Aluminium Painted	690 Dark Bronze Painted	606 Black Suede Powder Coat
		

## HOW TO ORDER



## Door Closing Latching Cycle



## Arms

### Non-Hold Open

Self-closes door every time door is opened. Auxiliary stop (by others) required except when using the Holder/Stop arm.

### Hold Open

Achieved by means of friction or ball and detent/roller. Friction hold open has a range of 90° to 180° using template location and mechanical adjustment. Ball and detent or roller hold open is effective in a range of 85° to 110°.

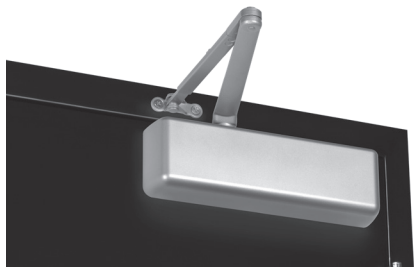
Hold open arm door closers are not permitted to be used on fire door assemblies.

### Notes:

- For heavy-duty parallel rigid arm applications, specify 5821 or 5821T, stop is removable.
- Before installing a door closer, verify the accessibility, fire, and life-safety requirements that are in effect. This includes the mounting height and projection into the clear opening. Check the adopted state and local building codes and consult the Authority Having Jurisdiction (AHJ).
- To maintain the warranty and ensure proper operation of the product, follow the installation instructions & templates and install on the inside of the building.
- Consult NFPA 80 for the hinge requirements on a fire door.
- Failure to use fasteners supplied with closer may void factory warranty.
- Optional fasteners are available for a variety of applications. Consult the door and frame manufacturer to ensure the proper fasteners are used to maintain certifications.
- Sizing charts are based on 1-3/4" x 7' standard weight doors swinging to 110°. Other application conditions (i.e. larger door heights or weight) may require larger size closer. Adjusting the spring power to meet the low opening force requirements of the Americans With Disabilities Act or ANSI/BHMA Standard A117.1, may not provide adequate closing power to dependably close and latch the door in some conditions (i.e. air movement from wind gusts or building stack pressure).

## ARM OPTIONS

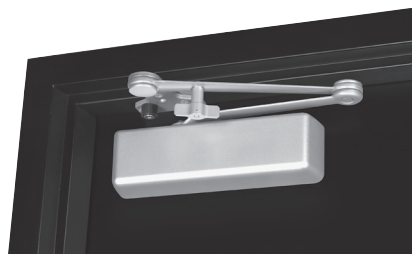
### Regular Arm



Non-hold open arm shown, hold open application available.

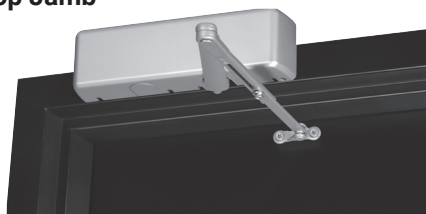
- Pull side application, double lever arm
- Sufficient frame, door and/or ceiling clearance must be considered
- Due to arm projection, application may present an aesthetics issue or be prone to vandalism

### 5821T (hold open) shown



- Holder/Stop arms incorporate a stop at the arm's soffit plate to dead stop the door at a predetermined degree of door swing between 85° and 110°, in 5° increments
- Prior to dead stop, backcheck slows the door speed to reduce the stop action

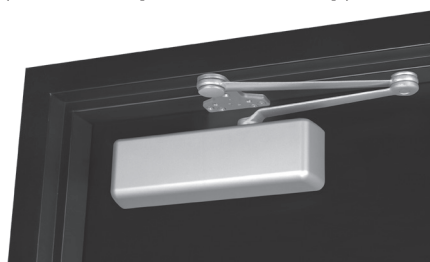
### Top Jamb



Non-hold open arm shown, hold open application available.

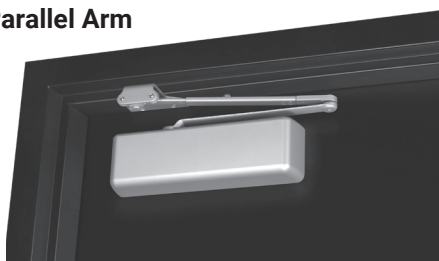
- Pull side application
- Sufficient frame face and/or ceiling clearance must be considered
- 2-1/4" (57mm) top rail on door is required
- Best door control for doors in exterior walls that swing out of building
- Consideration must be given to depth of reveal

### 5821 (non-hold open, without stop) shown



- Holder/Stop arm is intended for use where an auxiliary door stop cannot be used and low to moderate abuse is anticipated
- Stop is removable to allow for additional applications where auxiliary door stops are installed

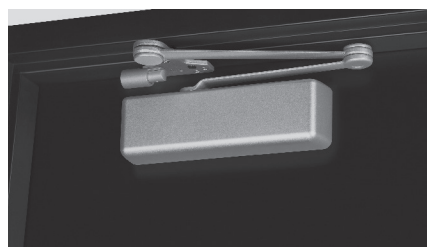
### Parallel Arm



Non-hold open arm shown, hold open application available.

- Pull side application
- In the closed position, there is little or no hardware projection beyond the frame face
- Due to arm geometry, approximately 25% less power-efficient than regular arm application
- Closer and arm mounted below the frame stop

### 5821 (non-hold open, with spring) shown



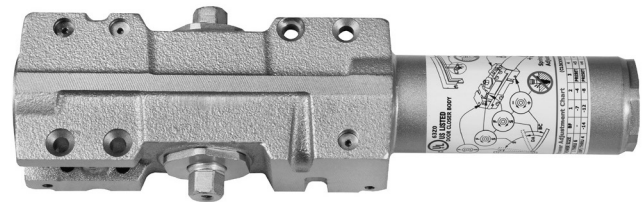
- Holder/Stop Spring arms incorporate a buffer spring that provides greater protection at the end of the door opening cycle
- Spring is removable

## MODEL/PART NUMBERS

Model Number	Description
5801	Non-Hold Open Tri-Packed
5801DL	Non-Hold Open Tri-Packed, Delayed Action
5811	Hold Open Tri-Packed
5821	Heavy-Duty Non-Hold Open Parallel Arm with Removable Stop
5821T	Heavy-Duty Hold Open Parallel Arm with Thumbturn and Removable Stop
5831	Heavy-Duty Non-Hold Open Parallel Arm with Spring and Removable Stop
5831T	Heavy-Duty Hold Open Parallel Arm with Thumbturn, Spring and Removable Stop

Note: for heavy-duty parallel rigid arm applications, specify 5821 or 5821T, stop is removable.

See page 5 for more how to order info.



Miscellaneous Parts*	
Part Number	Description
5800COV	Full Plastic Cover
5800SP	Screw Pack
2730Kit	Door Saver Spring Stop

\*Specify finish when ordering.

Cover Dimensions		
Width	Length	Projection
3-1/2" (89mm)	12-1/4" (311mm)	2-1/4" (57mm)

Optional Fasteners	
Part Number	Description
SN-134	Sleeve Nuts
TBGN134-47	Through-Bolts & Grommet Nuts

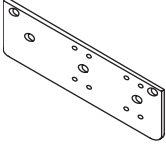
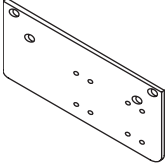
Note: Sleeve nuts furnished standard with all models.



**2730Kit**

**ACCESSORIES**

**Closer Mounting Plates**

	<p><b>5800RDP Narrow Frame Drop Plate (regular arm):</b>          Required for hinge side mount where top rail is less than 3-3/4" (95mm). Plate requires 2" (51mm) minimum top rail.</p>
	<p><b>5800RDP Narrow Top Rail Drop Plate (parallel arm):</b>          Required for parallel arm mounting where top rail is less than 5-1/2" (140mm), measure from the sop. Plate requires 2" (51mm) minimum top rail.</p>

Note: All measurements are Inches/mm.



**NOTES**

The ASSA ABLOY Group is the global leader in access solutions.  
Every day, we help billions of people experience a more open world.

ASSA ABLOY Opening Solutions leads the development within door openings and products for access solutions in homes, businesses and institutions. Our offering includes doors, frames, door and window hardware, mechanical and smart locks, access control and service.

**ACCENTRA**  
**ASSA ABLOY**

**TECHNICAL SUPPORT**

(Troubleshooting, product use and application, returns)

Tel: 855-557-5078

Email: [techsupport.accentra@assaabloyusa.com](mailto:techsupport.accentra@assaabloyusa.com)

**CUSTOMER SUPPORT**

(Orders, product configuration, pricing, lead-time)

Tel: 855-557-5078 x2

Email: [Customerservice.Accentra@assaabloy.com](mailto:Customerservice.Accentra@assaabloy.com)

**U.S.A.:**

ASSA ABLOY ACCENTRA™

225 Episcopal Road,  
Berlin, CT 06037-4004

Tel: 1-800-438-1951

Fax: 1-800-338-0965

[www.accentra-assaabloy.com](http://www.accentra-assaabloy.com)

**Canada:**

ASSA ABLOY Door Security Solutions Canada

160 Four Valley Drive  
Vaughan, Ontario L4K 4T9

Tel: 1-800-461-3007

Fax: 1-800-461-8989

[assaabloyss.ca](http://assaabloyss.ca)

**International:**

ASSA ABLOY Americas International

Tel: 1-905-821-7775

Fax: 1-905-821-1429

[assaabloyai.com](http://assaabloyai.com)